

On-wall water meters

At home in lots of apartments:
The Techem water meter with mature single-jet
technology in two versions.

Two different versions – one objective: reliable and mature technology for precise metering and simple installation in almost any application area. The on-wall water meter works using the single-jet principle, lots of versions make it into a true all-rounder.

In a nutshell

- Integration in the radio system, also retrospectively
- High measurement accuracy and measurement stability thanks to its sophisticated design
- radio 4 with an optical interface and flow direction recognition
- Low pressure loss and a high level of operational safety thanks to single-jet technology
- Suitable for cold water up to 30°C or hot water up to 90°C
- Suitable for wash stands and kitchen sinks, accessories for corner valves and fittings
- Special screw connections and extensions for different construction lengths
- Approved in accordance with the European Measuring Instruments Directive (MID)



radio 4 model

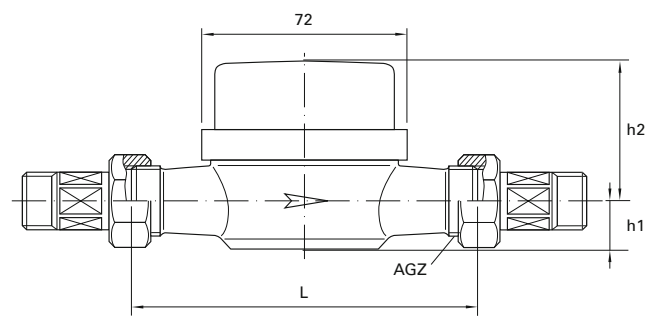
Thanks to a contact-free and non-wearing capacitive scan, it records the flow parameters of the mechanical meter, saving them in the radio module. The consumption values on the due date, the mid-month figures and month-end figures, as well as the meter data are transmitted by radio.

vario 3 model

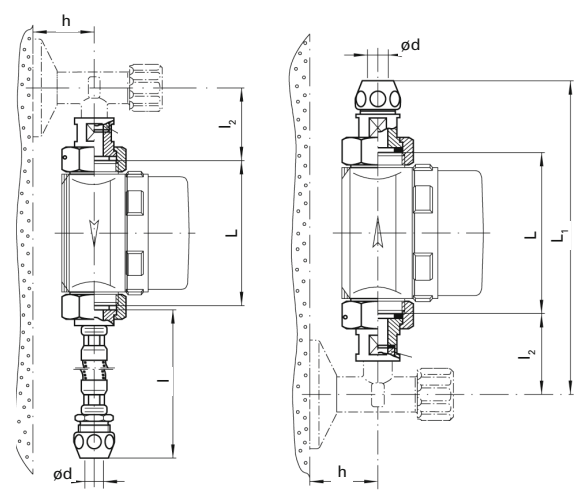
The version of the counter mechanism with an integrated modulator plate in vario 3 makes it possible to retrofit a radio module for wireless data transmission of the consumption data. The retrofitting is quite easy and uncomplicated.

Technical data

Nominal temperature:		up to (°C)				
Cold water meter:		30	30	30	30	30
Hot water meters:		90	90	90	90	90
Nominal flow rate Q3:	l/h	2.5	2.5	2.5	2.5	4.0
Lowest flow Q1:	m³/h	62.5/	62.5/	62.5/	62.5/	100/
horizontally/vertically:		62.5	62.5	62.5	62.5	100
Start-up flow rate:	l/h	8	8	8	8	15
horizontal approx.:						
Start-up flow rate:	l/h	14	14	22	22	22
vertical approx.:						
Measurement range		R40H/	R100H/	R40H/	R160H/	R160H/
horizontally/vertically:		40V	50V	40V	63V	63V
Pressure loss	bar	0.56	0.56	0.56	0.56	0.52
at Q3 approx.:						
Flow coefficient:	m³/h	3.2	3.2	3.2	3.2	5.05
Nominal pressure PN :	bar	10	10	10	10	10
Display range:		0.1 litre to 9,999 m³				
Construction length L:	mm	80	110	130	130	130
Connection thread on	AGZ	G ¾B	G ¾B	G ¾B	G 1B	G 1B
meter according to ISO						
228-1:						
Height h1:	mm	15	16	17	17	17
Height h2: AP vario 3	mm	58	54	54	54	54
Height h2: AP radio 3	mm	68	64	64	64	64
IP protection class:		65	65	65	65	65
Battery life (radio 4)		10 years + reserve				
Environmental		EN 14154 Class B				
conditions						



On-wall water meters



Wash stand installation

Technical data radio

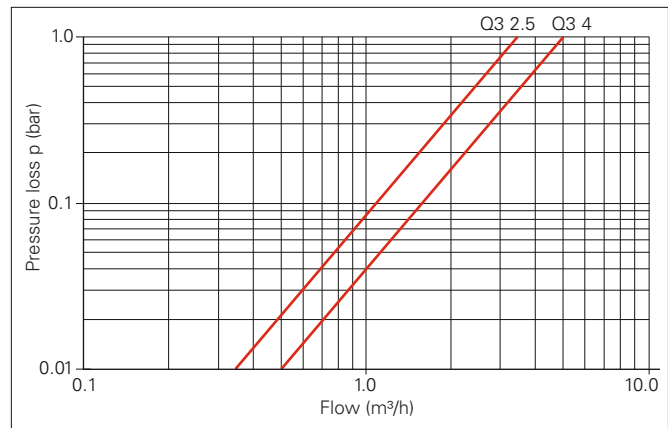
Radio mode		Proprietary
Radio data transmission		Due date value and status information, mid-month and month end consumption data from the previous 12 months
Transmitting frequency	(MHz)	868.95
Transmitting power	(W)	0.003 ... 0.015
Transmission period	(sec.)	0.008 ... 0.014
CE-conformity		According to guideline 2014/53/EU

Wash stand installation

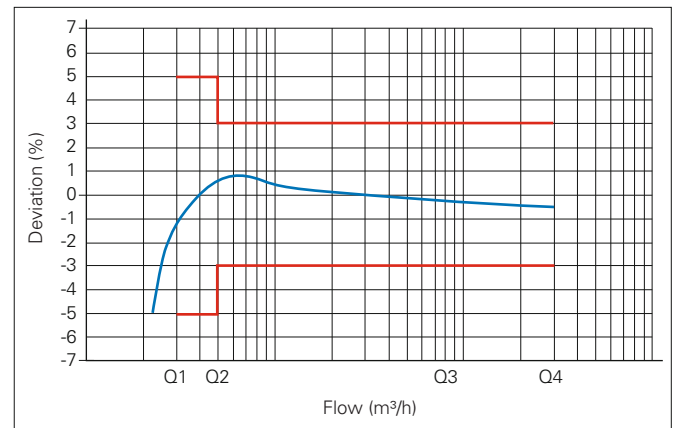
- L = 80 mm
- L1 = 204 mm
- l = approx. 400 mm
- l2 = 58 mm
- h = 20 mm
- ød = 10 mm

Accessories

Screw connections with thread connection according to DIN 2999, also in chrome-plated design. Screw connections with solder connection and accessories for wash stand installation



Pressure loss curve



Typical error graph